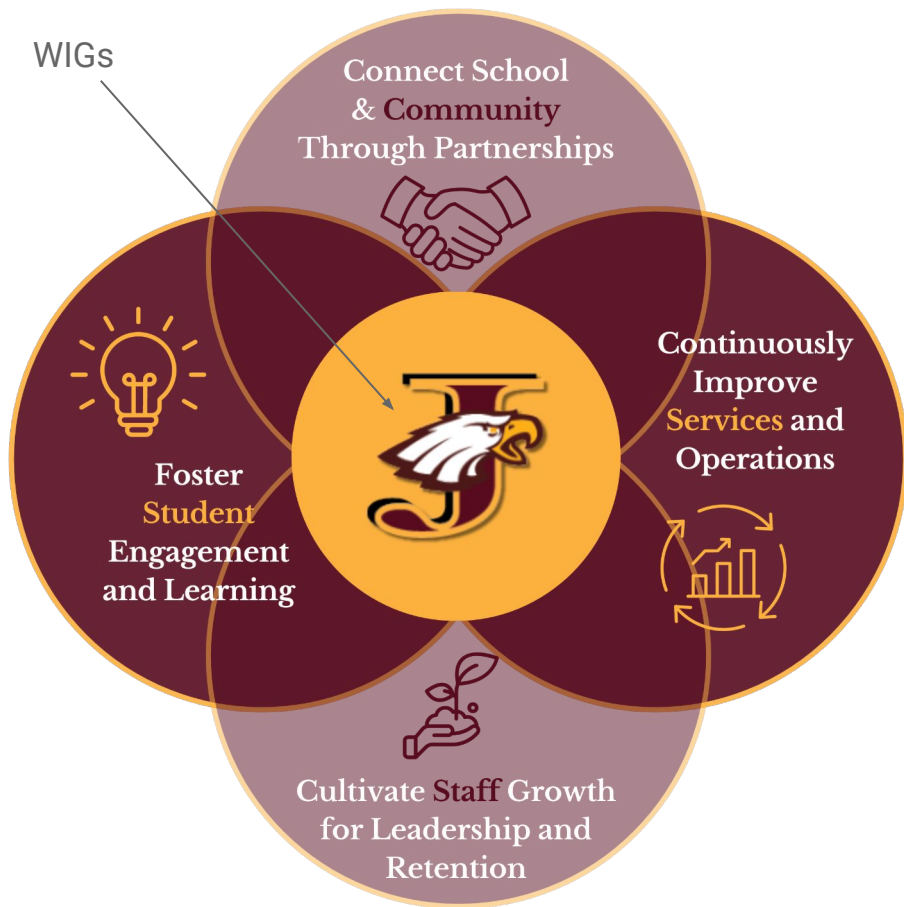


Presentation of 2024-2025 Goals

School District of Jefferson
Dr. Charles Urness, Superintendent





Board Policies And Administrative Guidelines That Align With This Action:

Policy 1110
Assessment Of District Goals

Guideline 1110
Assessment Of District Goals

Policy 1400.01
District Administrator Job Description And Responsibilities

Policy 2120
Management Restructuring And School Improvement

Policy 2131
Educational Outcome Goals And Expectations

Policy 3220
Staff Evaluation And Educator Effectiveness



• OUR MISSION •

Empowering futures together

• OUR VISION •

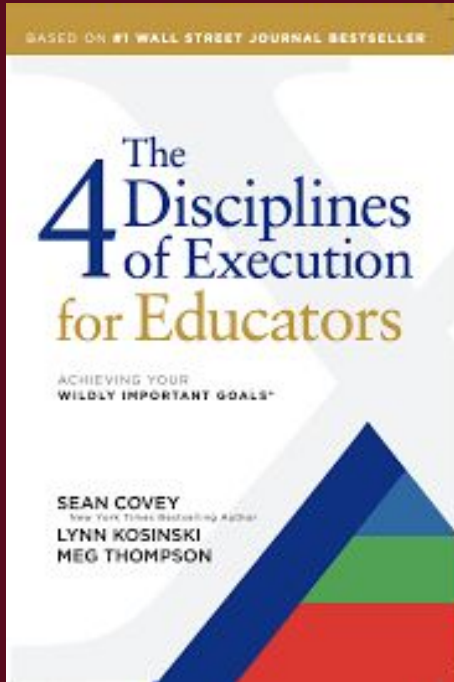
All students positively impact society

OUR COMMITMENTS

We commit to:

SAFETY & BELONGING:	Creating and maintaining a safe, productive environment where all people are treated with respect and dignity.
ENGAGEMENT:	Providing all students with relevant, high-quality core instruction, empowering them to discover their passion and reach their full potential.
GROWTH & ACCOUNTABILITY:	Developing successful outcomes for every student by eliminating inequities through self-reflection, growth, and action.
COMMUNICATION & OUTREACH:	Actively fostering family engagement and community involvement to build positive relationships, trust, and commitment.
DEVELOPMENT:	Taking responsibility for developing academically, socially, and behaviorally responsible citizens across our entire learning community.

What are the 4 Disciplines of Execution?



1. Focus on the Wildly Important Goals (WIGs)
2. Act on the Lead Measures
3. Keep a Compelling Scoreboard
4. Create a Cadence of Accountability



WIG 1:

During the 2024-2025 school year, all students will demonstrate progress toward their College, Career, and Life readiness through the following measures: a) at least one year's growth in math and reading in grades 4k – 8; b) progress toward proficiency on the SDoJ Student Blueprint (Redefining Ready!) in grades 9-11 and proficiency in grade 12.

Lead Measures:

- **East:** During the 2024-25 school year, an average of 80% of students who score below proficient (1 or 2) on their formative assessments(s) aligned to grade-level ELOs, as demonstrated by each PLC, will reach a score of proficient (3) or higher on their related summative assessments.
- **Sullivan:** During the 2024-25 school year, an average of 80% of students who score below proficient (1 or 2) on their formative assessments(s) aligned to grade-level ELOs, as demonstrated by each PLC, will reach a score of proficient (3) or higher on their related summative assessments.
- **West:** During the 2024-25 school year, an average of 80% of students who score below proficient (1 or 2) on their formative assessments(s) aligned to grade-level ELOs, as demonstrated by each PLC, will reach a score of proficient (3) or higher on their related summative assessments.
- **JMS:** During the 24-25 school year, students will increase reading growth by at least one year as measured by summative and formative measures. During the 24-25 school year, JMS students will increase their feeling of safety and connectedness to Jefferson Middle School as measured by student survey data.
- **JHS:** During the 2024-25 school year, 75% of students will maintain or grow on the ACT standardized assessment series as measured by their composite score. During the 2024-25 school year, the number of students scoring at or above benchmark on the ACT standardized assessment series will increase by 5% as compared to their previous PreACT Secure score for each grade level.
- **District:** We will target and support chronically absent students to reduce each building percentage by at least 3% (14.7% were chronically absent in 23-24).



WIG 2:

During the 2024-2025 school year, the School District of Jefferson will prioritize the recruitment and retention of staff by enhancing collaboration, leadership, growth, and sense of belonging as measured by an increase in our employee data (lead measures).

Lead Measures:

- SDoJ Exit Surveys
- Staff Satisfaction/Employee Engagement Survey Data*
- Adult Learning Framework (ALF) Coherence Tracking

*Spring survey tool to be determined by the School Board





**What questions
do you have?**

*We request Board
approval of the goals
at this time.*

